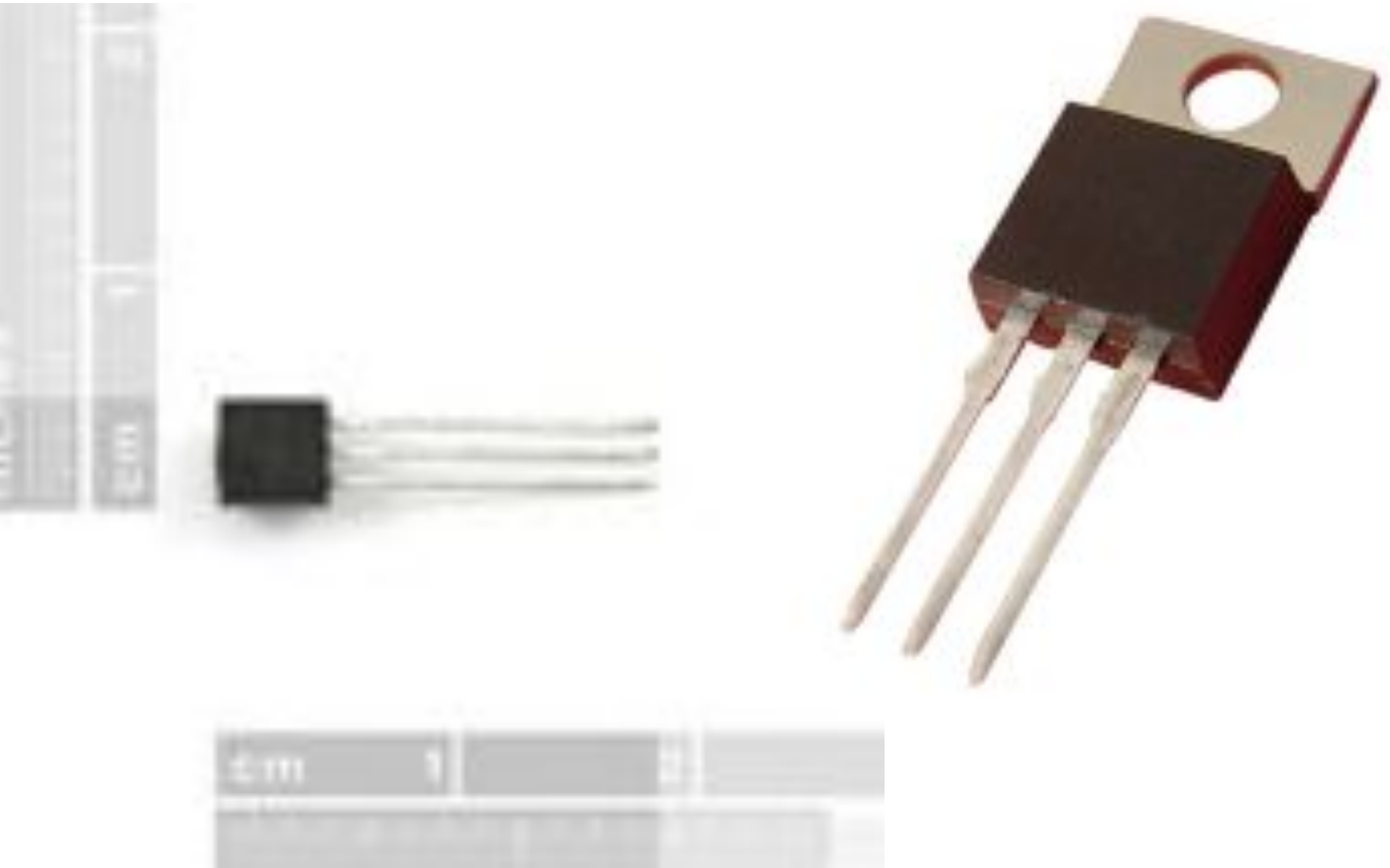


Week 7

The Transistor

It's 1947



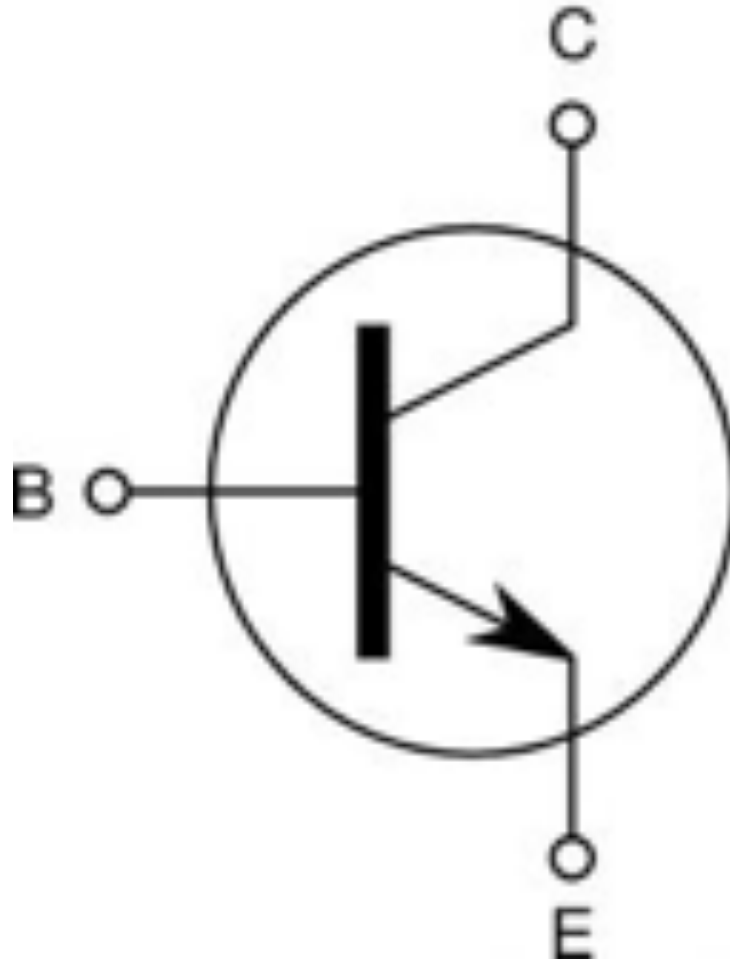
# Vacuum tube



# Transistor

- Resistor who's value changes
  - Switch
  - Amplifier
- 
- NPN is probably what you're using

# NPN Transistor

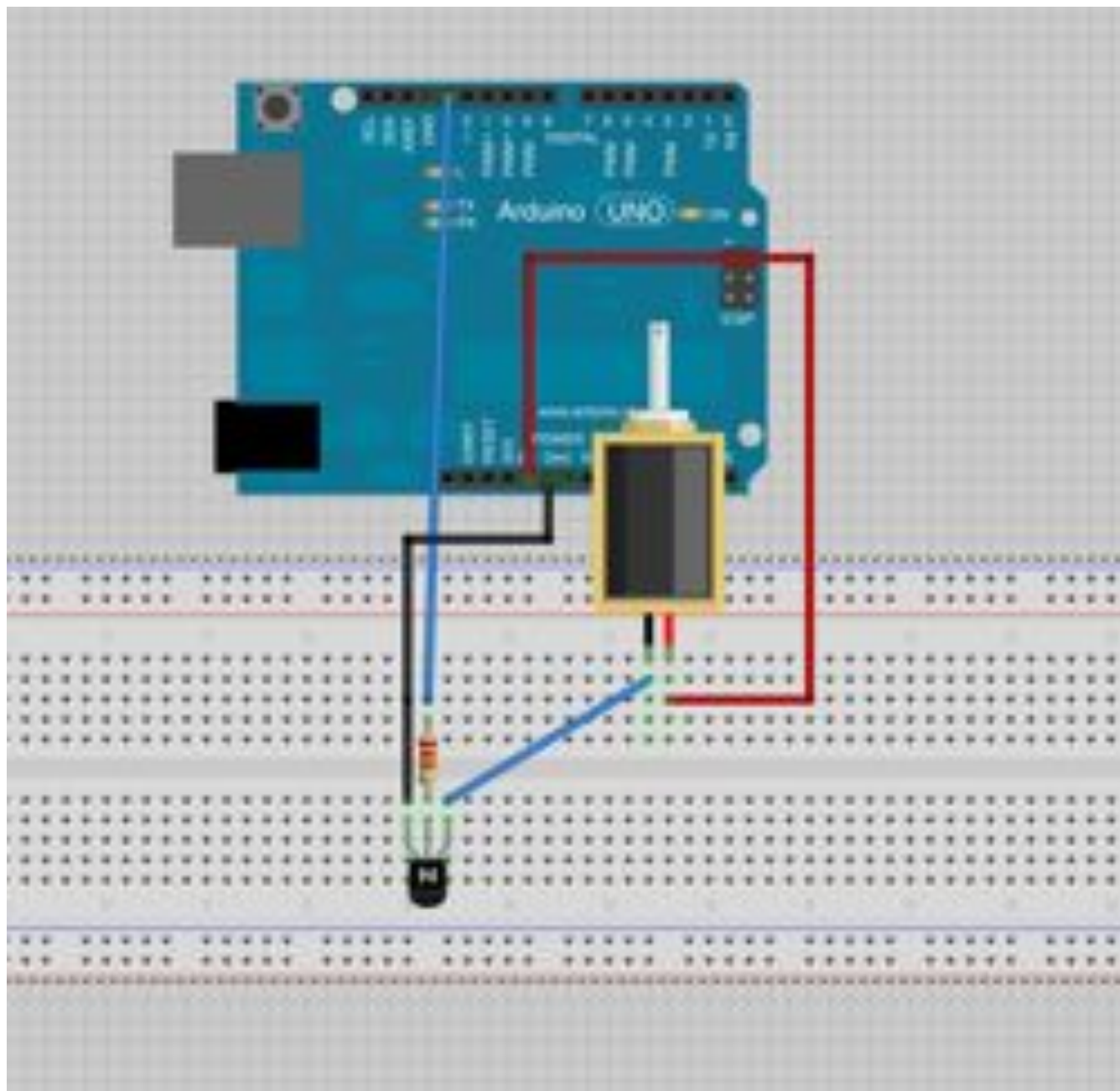


# Parts of an NPN Transistor

- Base
  - Collector
  - Emitter
- 
- Mosfets are different

# NPN Transistor

- Base – middle pin – goes to your Arduino pin
- Emitter is connected to ground
- Collector is connected to another component





# What can you do with MOSFETs (transistors) and solenoids?

<http://www.youtube.com/watch?v=GKkE-CAnHUk&feature=plcp>

# Arduino Shields

We're breaking out this chip when we work with Arduinos and their shields

